

ELICIUS

ELEKTRONIKUS VILLAMOS FOGYASZTÁSMÉRŐ



APPLICATION

The smart electricity meter is applicable for residential and small commercial electricity consumers. The meter is characterized by its simple and reliable technology, offers a double-spaced information display for the indication of consumption values and EDL information and provides the established Diehl Metering communication technology. The meter is able to communicate with the existing Diehl Metering system components, and can be integrated into the smart metering infrastructure for walk-by / drive-by or fixed network operations. A module compartment at the ELICIUS can be equipped with radio and wire-based communication modules.

FEATURES

- ▶ Three-point mounting
- ▶ Low intrinsic consumption
- ▶ Active energy measurement for im- and export
- ▶ Network parameter recording
- ▶ System clock for due date generation
- ▶ Tamper detection
- ▶ EDL functions
- ▶ IZAR+ radio performance
- ▶ Mobile readout
- ▶ Seamless integration in fixed network installation
- ▶ BSI conform to TR 03109 for unidirectional communication
- ▶ Conformity to Open Metering System specification

ELICIUS

ELEKTRONIKUS VILLAMOS
FOGYASZTÁSMÉRŐ

TYPE EXAMINATION

ELICIUS	
Certification for	MID, DIN EN 50470-1, DIN EN 50470-3

NOMINAL WORKING CONDITIONS

ELICIUS	
Un	3x230/400 V, 1x230 V at L3
Iref respectively Ib or Ih (maximum current Imax)	5 (60) A or 5(65) A
Ist	0,02 A
Imin	0,1 A
fn	50 Hz
Accuracy class	Cl. A, B
Measurement mode	Import: +A, Export: -A
Impulse rating test output, LED	10000 imp/kWh
Energy register for import energy	1
Energy register for export energy	1
Working temperature range	-25°C to +55°C
Environmental conditions / moisture	< 100%
Mechanical conditions	M1
Field condition for the meter	Indoor
Protection class	II
Protection category	IP51

DISPLAY

- Double spaced, Display with network information
- 6- or 8 digit indication for energy values
- 3- digit indication of OBIS codes
- INFO-indication for historical energy values resettable by push button
- Indication of due dates, power indication

INTERFACES

ELICIUS	
Meteorological test output	Pulse output infrared, pulse width 4 ms continuous light at halt state
Optical	Interface DIN EN 62056-21, Interface with optional password protection
Radio (wM-Bus)	868 MHz or 434 MHz, unidirectional, Mode T1 configurable telegram, Open Metering System specification, symmetrical encryption as OMS Vol. 4
M-Bus	Baud rate 300, 2400 and 9600 baud (auto baud detection), power input: 2x M-Bus loads, Connection on M-Bus Master for V < 40 V, Cable length according to EN 13757-2

DATA LIST

ELICIUS	
Data list for Radio, M-Bus	Active energy +A, active energy -A, due date values, M-Bus load profile, device-parameter; optional current, voltage, frequency, reactive power
Data list for optical interface	Measuring values, device-parameter, parameterization values, time

ELICIUS

ELEKTRONIKUS VILLAMDS
FOGYASZTÁSMÉR

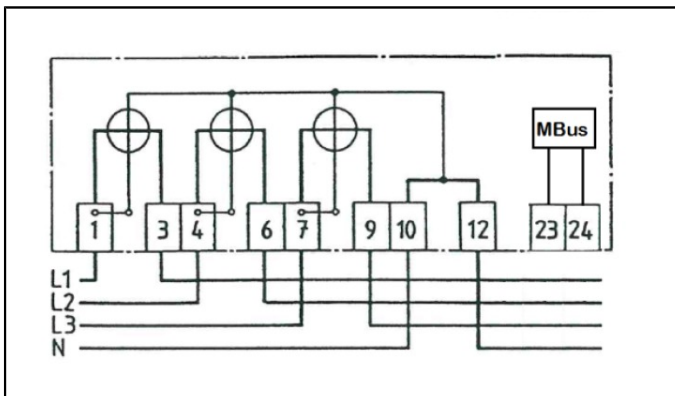
K1x6l EGN3D3Kl R7D7l

7>5;GE	
FVVéif_é`k TW_ W Wf	FVVéif_é`k XWnéfW" l' l ! \$H3 Xál [ea`]é` f/%Zál [eø UeSf`S] al áel FVVéif_é`k XWnéfW # \$ l ! \$f' H3/#Zál [eø UeSf`S] al áefl ács_ TW_ W Wf, eZg` f%" ^ 2 AZ_ Xál [ea`]é` f
7? H: _ bg↑geée: 8fvél f	6:@7@' " &)" Ž#éeŽZ S] _ VVXWV` W l;75 (\$"' \$Ž##;75 (\$"' %Z\$#l 5>5! 8bcFD' "') +l ;_ bg↑gefvél f" l#! \$" " ^ el *]H! #l e
? áY` VèVè_ W	7^W á^ael Zal l áSVaff_ áY` VèVè_ W VVWJ fá^eée dSel fâe
EadJ SbaUe	?]óVée[ée dSel fâe úl W Wf éd é] Wée
4Wè òdS	? áeaVSYae Tál [e[VVY /76>Ž_ éd fl Zal l áSVaff hS`be [VW òdS/ba` faeeáY ¶l#" bb_ fi
3_ T[W f fV_ bVfSfgdM` efadSYW	Ž\$' »5 fa t) " »5
6SfS eWJgdfk	@W_ ŽXWV _ W_ òdS

FOGYASZTÁSMÉRÉS SZÁMÍTÁSI MÓDJA

7>5;GE		
= [h]fW	DW [el fV Sl a` aeifo	8aYkSel fâe dW [el fVd
: _ badf_ éd dWfgd efab_ òVTS` #Ž` Ž`		7faf / 7># t 7>S t 7>% /Xad7># t 7>S t 7>% 0 " fi7faf / " /Xad7># t 7>S t 7>% . " fi
=éf[dá` kò_ éd	#Ž` Ž`	7faf / 7># t 7>S t 7>% /Xad7faf 0 " fi
	\$Ž` Ž`	Xad7faf . "
7] badf_ éd dWfgd efab_ òVTS` \$Ž` Ž`		7faf / 7># t 7>S t 7>% /Xad7># t 7>S t 7>% . " fi7faf / " /Xad7># t 7>S t 7>% 0 " fi
: _ badf_ éd dWfgd efab `é]ú^	\$Ž` Ž`	7faf / 7># t 7>S t 7>% /XadBfaf . " l [\$Ž` Ž` SVVWfi/XadBfaf 0 " l [\$Ž` Ž` egTfdSufWfi
=éf[dá` kò_ éd _ [V]Y		
bal [fih dW [el fVdW	#Ž` Ž`	7faf / n7>#nt n7>Snt n7>%n
: Sfád Sb[Xg`] Ujõ [h]fVWV]é` f	#Ž` Ž`	l eS ZSfádédéf] [VM éeW` Sba` fS! ZVWV fWhSYk ZSha` fS VVkel Wd

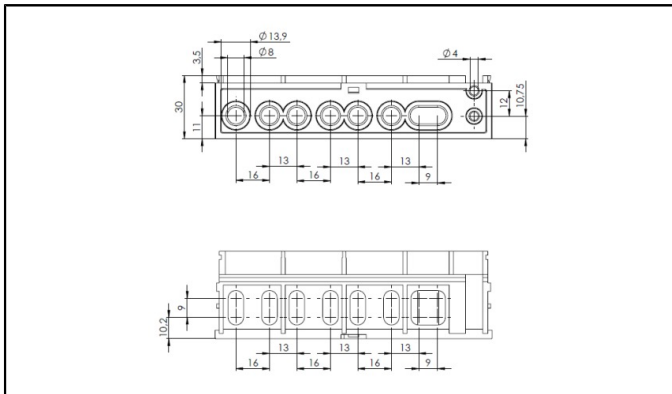
CSATLAKOZÓ DIAGRAM



ELICIUS

ELEKTRONIKUS VILLAMOS
FOGYASZTÁSMÉRŐ

SORKAPCSOK

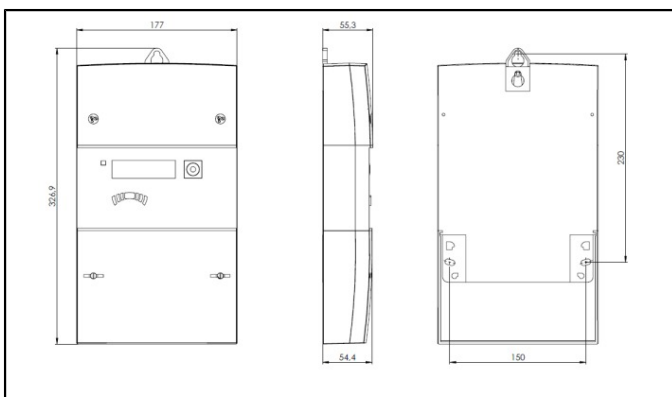


ELICIUS

Sorkapocs csavarok áram 2x M5 végződésenként

Sorkapocs csavarok M-Bus csatlakzás 1x M3 végződésenként

MÉRETEK



TIPIKUS JELLEGGÖRBE

